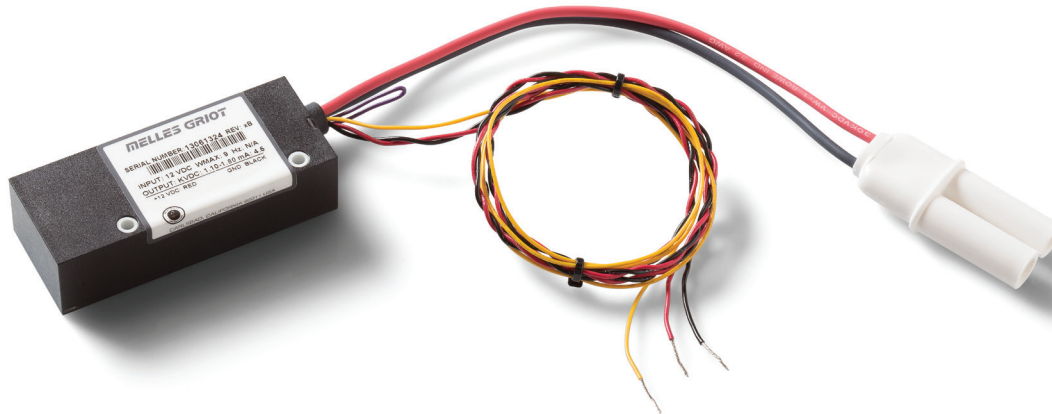
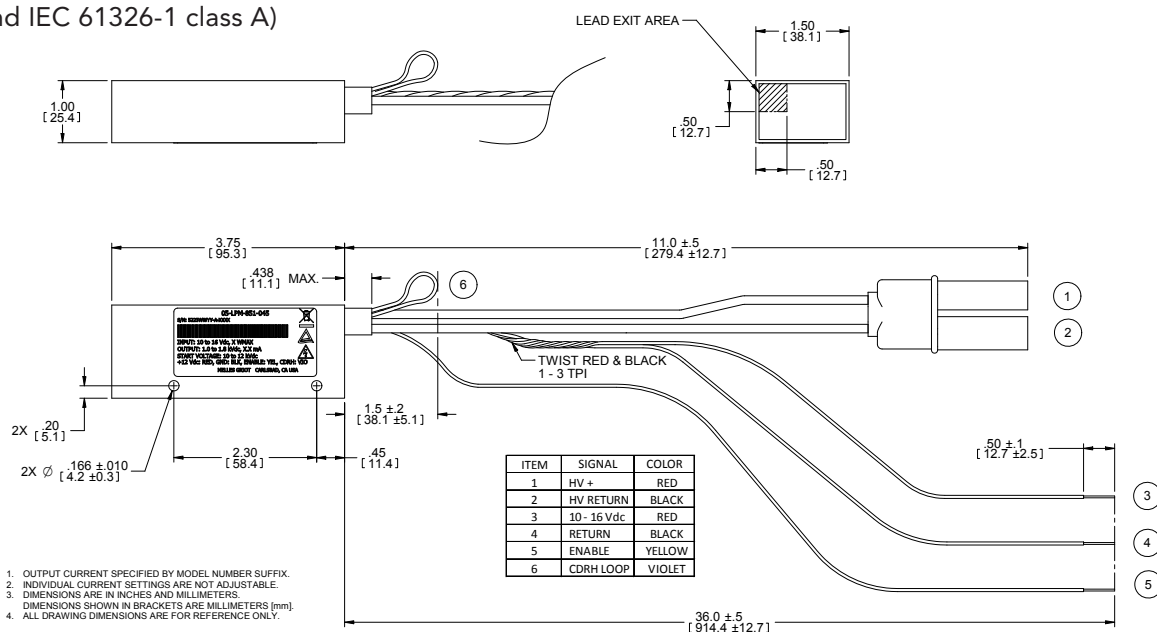


"One for All" Compact Low Noise HeNe Laser DC Power Supply



Introducing the all-new Melles Griot compact, low noise DC Power Supply Series, featuring hybrid SMT technology. This new design demonstrates exceptionally low noise performance in a compact package. Offering an expanded operating voltage and current range, it can be used to operate a number of laser models which previously required model-specific power supplies. In addition to high reliability, this versatile power supply boasts low radiated emissions, a typical P-P current ripple value of <math><0.3\%</math> and a start voltage of >10 kVdc.

- 10-16 Vdc input
- Output voltage range from 1000 to 1850 Vdc
- Output current range from 3.0 to 5.5
- Available operating current range configurations:
 - 3.5 mA (05-LPM-851-035)
 - 4.0 mA (05-LPM-851-040)
 - 4.5 mA (05-LPM-851-045)
- Input power: 14.5 W max
- Regulatory approvals: cTUVus, CE (IEC 60950-1 and IEC 61326-1 class A)
- CDRH time delay (3 to 7 seconds)
- TTL compatible disable option
- Start voltage >10 kVdc
- Output current ripple <math><0.3\%</math> P-P (0.1% RMS)
- Temperature range
 - Operating -20°C to +60°C
 - Storage -40°C to +80°C



MELLES GRIOT